

SANTEC
FLUID IMAGINATION

E-SERIES: CHADWICK COLLECTION
PRESSURE BALANCED WITH DIVERTER/TRIM ONLY
WITH "GL" HANDLES

MODEL: 4335GL10
4335GL75



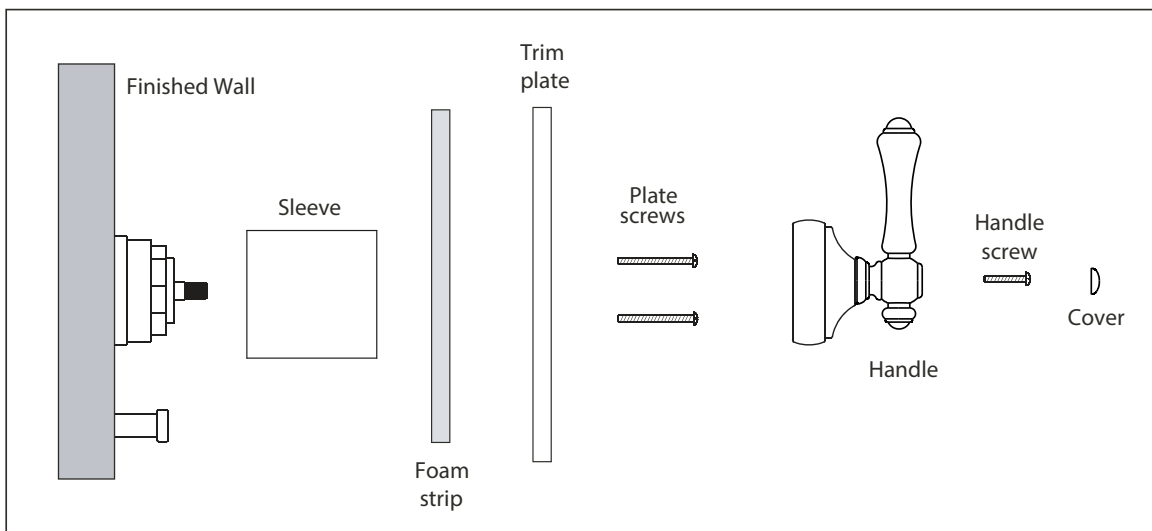
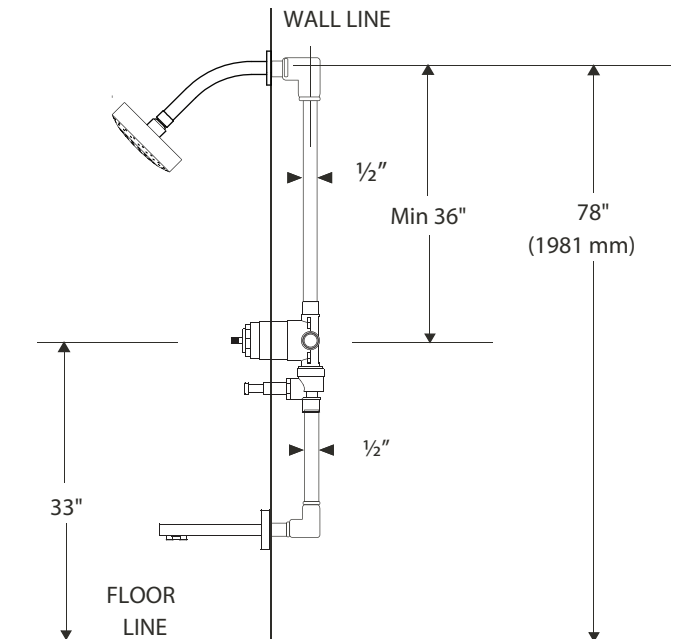
Specifications

Description

This product is precision engineered to provide satisfactory performance provided it is installed and operated in accordance with our recommendations contained in this manual. In order to fully enjoy the comfort, safety and the reliability of your pressure balancing valve, be certain to familiarize yourself with the contents of this manual.

Specification and Dimensions

- Minimum operating pressure 20 psi
- Maximum operating pressure 145 psi
- Maximum test pressure 500 psi
- Hot and cold water inlets 1/2" IPS
- Shower outlet 1/2" IPS
- Flow capacity 5 USGPM @ 50 psi



Trim

TRIM PLATE

- Fit sleeve onto valve until it bottoms out.
- Place foam strip around the inner edge of the shower plate.
- Press the shower plate against the wall.
- Screw the 2 plate screws through the plate holes and onto the valve's screw holes. Tighten both screws firmly.

HANDLE

- Insert the handle onto the valve stem. Turn the handle clockwise until it reaches the end. Reposition the handle to be facing up at 12 o'clock position.
- Press the handle against the valve's stem. Insert and thread the handle screw into the handle to connect it to the valve.
- Insert the cap into the handle to cover screw hole.

