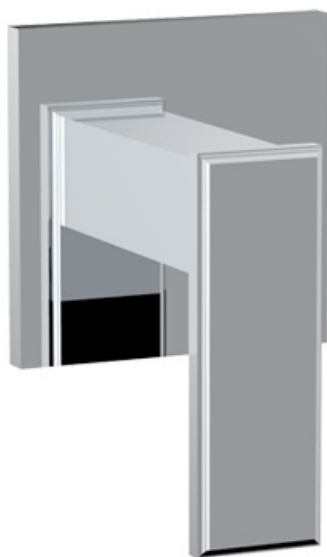




COLLECTION - BAROSA STYLE HANDLE TRIM
W/ ADJUSTABLE BROACH

ITEM NUMBER

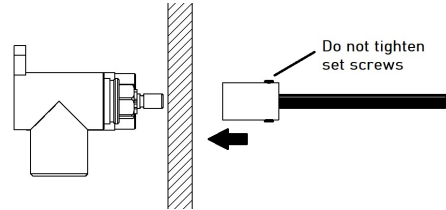
YY-MC-TM



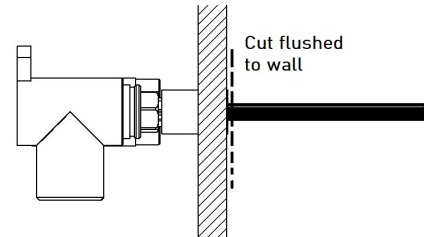
Handle Trim

Handle Trim Installation (1)

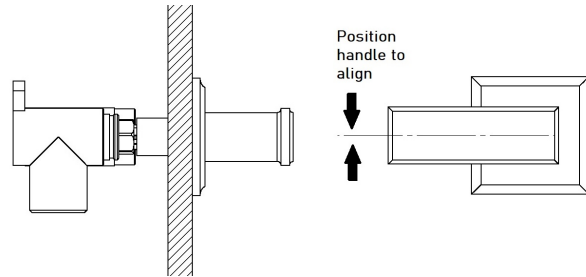
- 1** Ensure the valve is in the closed position. Assemble the broach extension, adjustable broach extension adapter, and set screw. Insert the broach assembly onto the valve.
NOTE: DO NOT TIGHTEN THE SET SCREWS ON THE BROACH ASSEMBLY ADAPTER. THE BROACH EXTENSION NEEDS FREEDOM TO THREAD WHEN ALIGNING THE HANDLE LEVER.



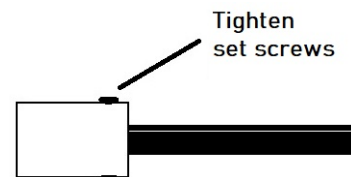
- 2** Cut the remainder of the broach extension to be flushed to the wall.
NOTE: PLEASE DOUBLE-CHECK THE APPROPRIATE LENGTH OF THE BROACH EXTENSION TO CUT. ENSURE THERE IS ENOUGH FOR THE HANDLE ASSEMBLY TO BE INSERTED ONTO IT AND ENGAGE THE VALVE.



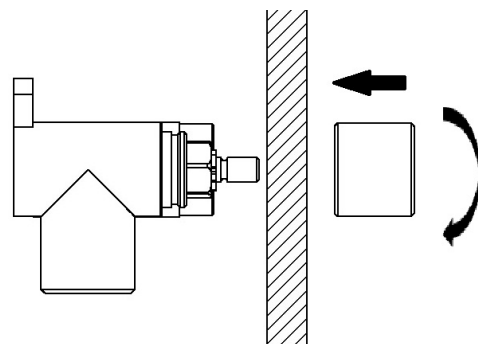
- 3** Insert the handle assembly onto the broach. Position the handle until it is aligned as shown in the right image. Valve should still be in the closed position.



- 4** Take out broach assembly and tighten set screw to lock the broach extension in place. Make note of the broach assembly position against the valve.



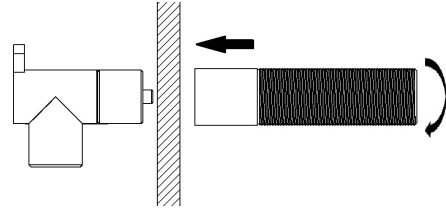
- 5** Thread the all thread adapter onto the valve.



Handle Trim

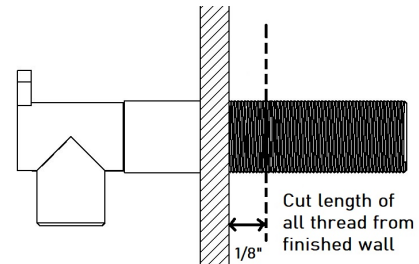
Handle Trim Installation (2)

- 6 Thread the all thread extension all the way through the all thread adapter.

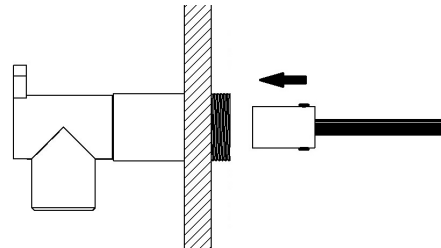


- 7 From the finished wall measure a distance of 1/8" on the all thread and make a mark. Cut the excess all thread at the mark.

NOTE: PLEASE DOUBLE-CHECK THE APPROPRIATE LENGTH OF THE ALL THREAD EXTENSION TO CUT. ENSURE THERE IS ENOUGH FOR THE HANDLE ESCUTCHEON TO THREAD ON.

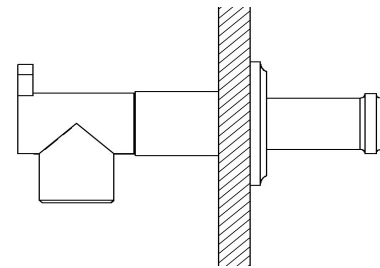


- 8 Insert the broach assembly in the sleeve and onto the valve. Ensure the broach assembly is in the correct position for correct handle alignment.



- 9 Thread the escutcheon of the handle assembly onto the all thread and broach assembly ensuring the handle position remains in the closed position. Keep tightening the escutcheon until the base of the handle reaches the finish wall. Tighten snugly, but do not over tighten.

NOTE: IF THE BASE OF THE HANDLE DOES NOT THREAD ALL THE WAY TO THE FINISHED WALL YOU WILL HAVE TO REMOVE THE HANDLE AND CUT A LITTLE MORE EXCESS OFF OF THE ALL THREAD AND STEM KEY.



- 10 Check the lever positions. The lever should only rotate to the following positions:

FULLY ON = 6 o'clock (hot & cold)

FULLY OFF = 9 o'clock (hot) & 3 o'clock (cold)

