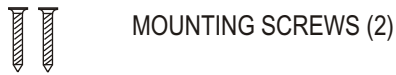
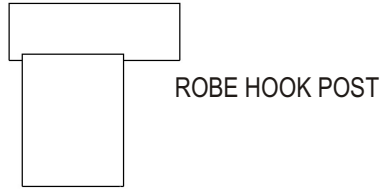
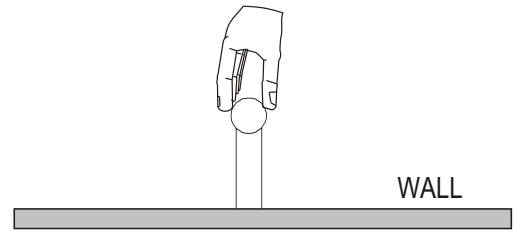


# ROBE HOOK

---

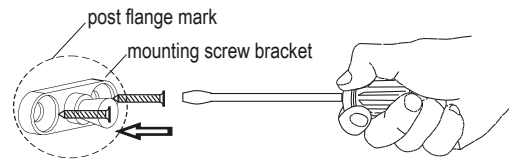


- 1- Take the hook post out of the box.  
Place the post against the assigned wall location.  
Make sure that the hook is leveled.  
Mark the post flange position and remove the trim.



- 2- Using the Allen key provided, remove the mounting screw bracket from the hook post.  
Press the mounting screw bracket against marked hook post position on the wall and mark the screw hole positions.

## WOODEN SURFACE



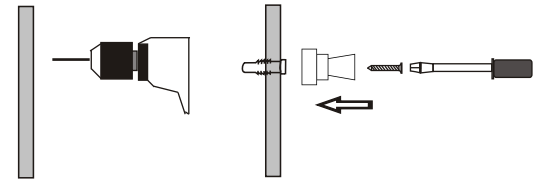
### 2a- INSTALLING ON WOODEN SURFACE

- For wooden surface, the mounting screw bracket can be secured by screwing the screws directly into the wall.

### 2b- INSTALLING ON A DRYWALL

- Using a drill, pre-drill holes for the anchors.
- Insert the anchors into the wall.
- The mounting screw bracket can be secured by screwing the screws into the anchors.

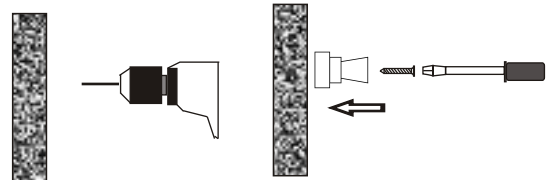
## DRY WALL SURFACE



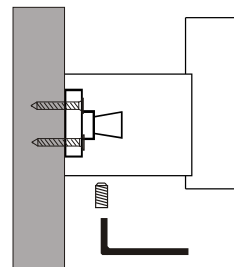
### 2c- IF INSTALLING ON A SOLID/HARD SURFACE

- Measure the dimensions carefully.
- Using a drill, pre-drill the holes.
- Secure the mounting screw bracket by screwing the screws into the wall.

## HARD SURFACE



- 3- Press the hook post against the mounting screw bracket.  
Align the hook post and secure it by tightening the set screw.



- 4- Check the hook post to make sure it is firmly secured.  
If not, tighten the set screw with the Allen key.