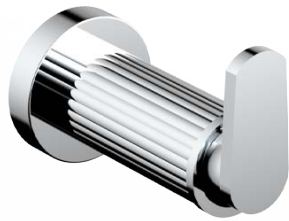


# SANTEC

FLUID IMAGINATION

---

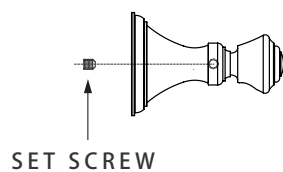
ROBE HOOK



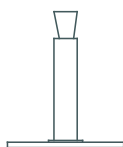
\*Illustration may not depict actual products

# PARTS BREAKDOWN

---



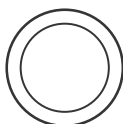
Robe Hook Body



MOUNTING HARDWARE POST



MOUNTING SCREWS (4)



RUBBER WASHER [KLASSICA ONLY]



SOLID WALL ANCHORS (4)



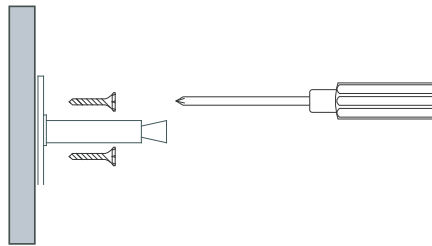
ALLEN KEY

## Installation

Remove the mounting hardware post from the accessory post and use it as a reference for positioning.

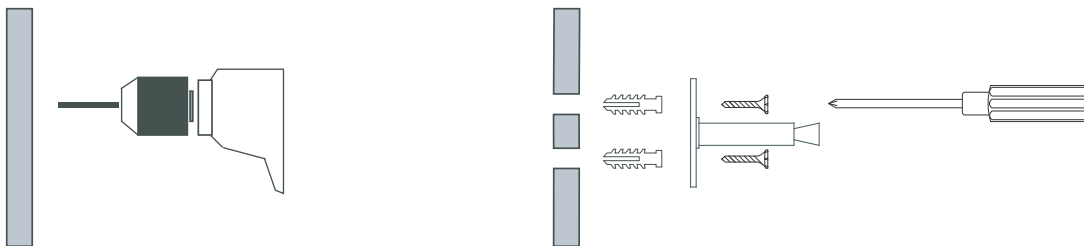
## Installing On Wooden Surface

For wooden surface, the mounting hardware post can be secured by threading the screws directly into the wall.



## Installing On Solid/Hard Surface and Drywall

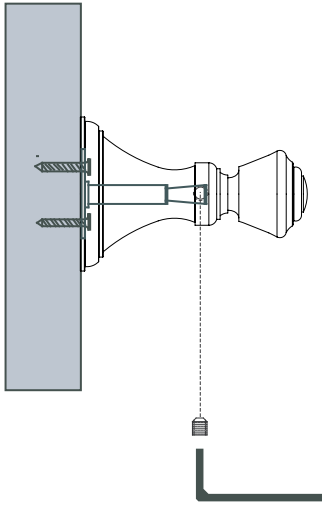
Measure the dimensions carefully, mark the four screw hole positions by using the mounting hardware post. Using a drill, pre-drill the holes. Insert anchors into the wall. Secure the mounting hardware posts by tightening the screws into the anchors.



# TOWEL BAR

---

## Securing In Position



Using the provided allen key, loosen the accessory post's set screw.

**\*For Klassica models, make sure there is a rubber washer underneath the accessory post flange.**

Slip the accessory post onto the mounting hardware post.

Secure the accessory post by tightening the set screw.