

SANTEC

FLUID IMAGINATION

DESIGNER SERIES

HAND TOWEL BAR



KEEP THIS INSTRUCTION BOOKLET FOR FUTURE REFERENCE

Important: Santec reserves the right to request additional documents before servicing warranty requests.

SANTEC has the right to make necessary design changes where applicable.

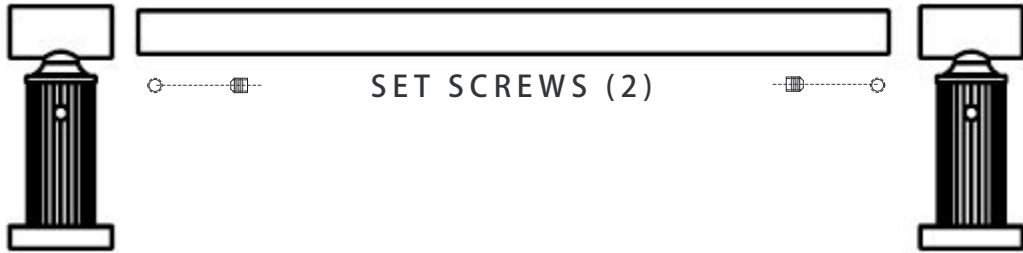
*Illustration may not depict actual products

PARTS BREAKDOWN

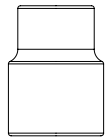
LEFT
BAR POST

RIGHT
BAR POST

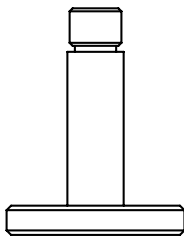
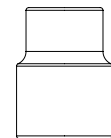
HAND TOWEL BAR



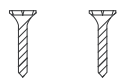
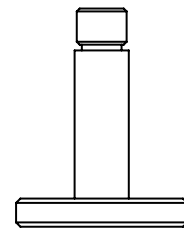
SET SCREWS (2)



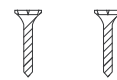
ACCESSORIES INSERT (2)



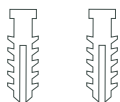
MOUNTING HARDWARE POSTS (2)



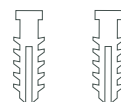
DRY WALL SCREWS (4)



DRY WALL TOGGLES (4)



SOLID WALL ANCHORS (4)



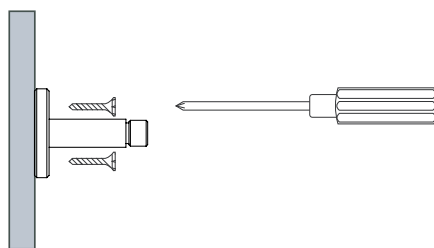
ALLEN KEY

HAND TOWEL BAR

Remove the Mounting Hardware Post from the Bar Posts by unscrewing it from the adapter and use them as references for positioning. Make sure that the Bar is level and the Bar Post positions are correct.

Installing On Wooden Surface

For wooden surface, the Mounting Hardware Posts can be secured by threading the Screws directly into the wall.



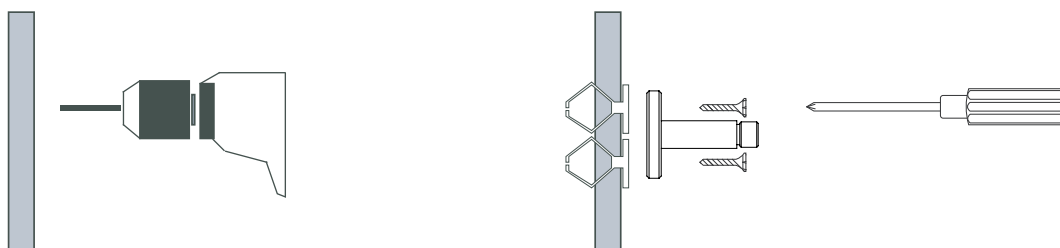
Installing On Drywall

Mark the four screw hole positions by using the Mounting Hardware Post.

Using a drill, pre-drill holes for the Dry Wall Toggles.

Fold the Dry Wall Toggle's leg and insert it into the wall.

The Mounting Hardware Posts can be secured by screwing the Screws into the Toggles.



HAND TOWEL BAR

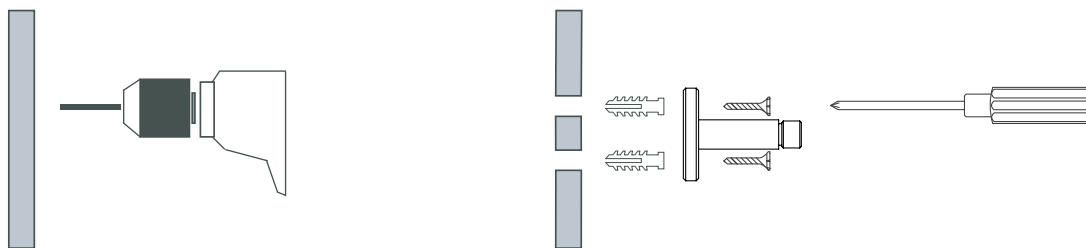
Installing On Solid/Hard Surface

Measure the dimensions carefully, mark the four screw hole positions by using the Mounting Hardware Post.

Using a drill, pre-drill the holes.

Insert Anchors into the wall.

Secure the Mounting Hardware Posts by tightening the Screws into the Anchors.

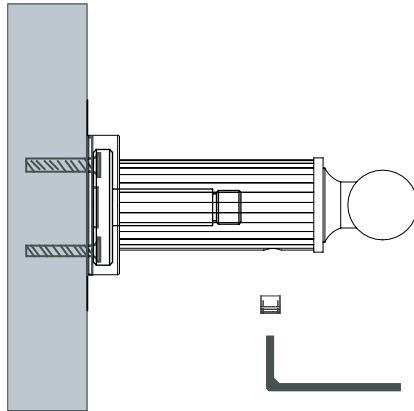


Measuring the Mounting Hardware Posts

After assembling the first mounting Hardware Post at the desired height, slip one side of the hand towel Bar into the Mounting Hardware Post and the second post on the wall. mark above ,below, right, and left of the post with a pencil and remove the hand towel bar assembly. Connect the two lines to find the center.

Place the center of the other Mounting Hardware Post over the mark and check with a level to make sure the height of both is the same. When level and centered, mark the screw hole positions.

Securing In Position



Using the allen key provided, loosen the bar posts' set screws.

Set the bar posts apart from each other onto a flat surface with openings facing each other .

Position the flange on the mounting post hardware.

Screw the mounting hardware adaptor to the post hardware.

screw the mounting post to the flange.

Insert the hand towel bar into both left and right unsecured bar posts.

Make sure the hand towel bar assembly is fitted together securely.

Lift the hand towel bar assembly to the wall and align with the mounting posts.

Slip the hand towel bar assembly over the left and right mounting hardware posts.

Adjust the bar posts if necessary and secure by firmly tightening the set screws with the provided allen key.