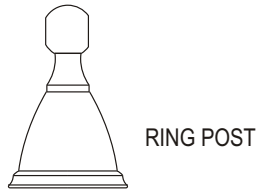
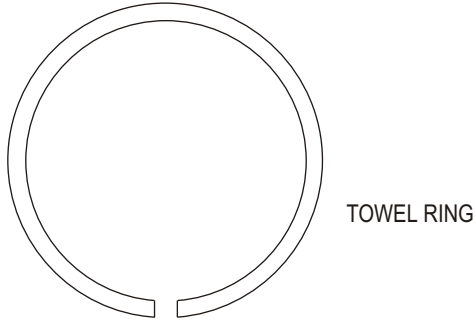


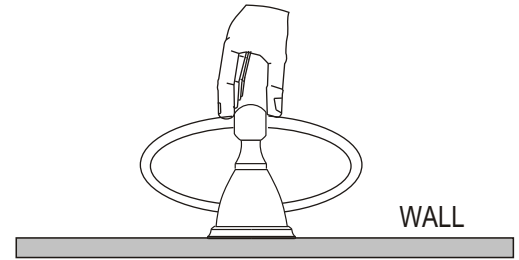
ESTATE SERIES BRITANI COLLECTION TOWEL RING



INSPECTED BY _____

KEEP THIS INSTRUCTION BOOKLET FOR FUTURE REFERENCE

- 1- Take the ring post with the ring off the box.
Place the trim parts against the assigned wall location.
Make sure that the ring is leveled.
Mark the ring post flange position and remove the trim.



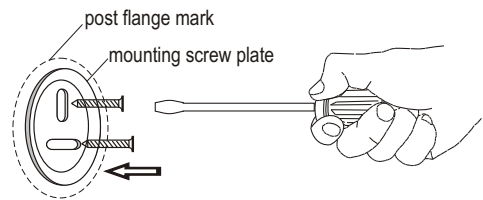
- 2- Using the Allen key provided, remove the mounting screw plates from the ring posts.

Press the mounting screw plate against ring post position on the wall and mark the screw hole positions.

2a- INSTALLING ON WOODEN SURFACE

- For wooden surface, the mounting screw plates can be secured by screwing the screws directly into the wall.

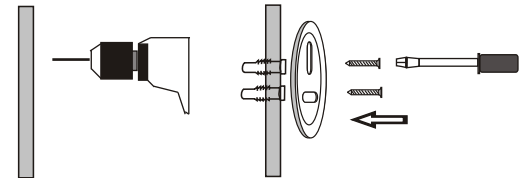
WOODEN SURFACE



2b- INSTALLING ON A DRYWALL

- Using a drill, pre-drill holes for the anchors.
- Insert the anchors into the wall.
- The mounting screw plate can be secured by screwing the screws into the anchors.

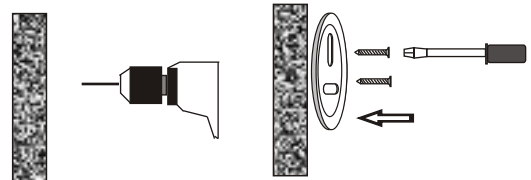
DRY WALL SURFACE



2c- IF INSTALLING ON A SOLID/HARD SURFACE

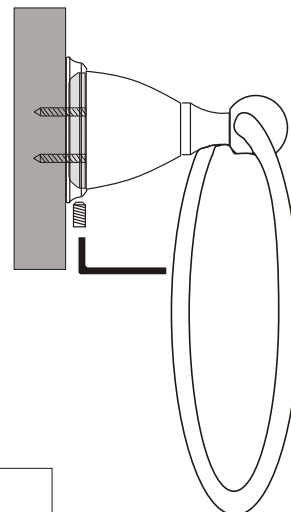
- Measure the dimensions carefully.
- Using a drill, pre-drill the holes.
- Secure the mounting screw plate by screwing the screws into the wall.

HARD SURFACE



- 3- Press the ring post against the mounting screw plate.
Align the ring post and secure it by tightening the set screw.

- 4- Check the ring post to make sure it is firmly secured.
If not, tighten the set screw with the Allen key.





SANTEC ESTATE SERIES PRODUCT WARRANTY

1. **Finishes:** Santec **Polished Chrome** , Satin Nickel and **PVDBrass** finishes carry a **Limited Lifetime** warranty against manufacturing defects and tarnish to the original purchaser
Santec Coco finish carry a ten (10) years limited warranty against manufacturing defects and tarnish to the original purchaser
2. **Cartridges:** Santec Cartridges carry a lifetime limited warranty against manufacturing defects for the life of the product to the original purchaser.
3. **Parts:** Santec parts carry a Ten (10) year limited warranty against manufacturing defects, to the original purchaser.
4. **Warranty exclusions and limitations :** This warranty does not cover: damage due to negligence, accident, abuse, improper installation, or improper maintenance such as, but not limited to: heat from soldering during installation, the use of plumbers putty, damage from tools used during installation, the use or exposure to chemicals or cleaning products either abrasive or non abrasive or the use of any cleaning tool or product other than a soft, clean cloth. This warranty does not cover: changes in the finish or in the product due to normal wear or aging and does not cover any product or parts which have been altered or used in a manner not typical for the product. **This warranty does not cover and Santec will not be held liable for damage to products caused by the freight carrier and a claim should be made immediately to the freight carrier should this occur.** This warranty does not cover any cost involved in the installation, repair, or replacement of any Santec product or part. This warranty does not cover and Santec will not be held liable for any loss, damages, or expenses, incidental or consequential whatsoever, originating from the purchase, installation, use, repair, failure, or replacement of any Santec product or part, as allowed by law. The product or components of the covered product will either be repaired, refinished or replaced, at the sole discretion of Santec. Santec reserves the right to examine any product claimed defective prior to any warranty claim being accepted or processed, at its sole discretion. This warranty gives you specific legal rights and you may have other rights which may vary from state to state.

Effective **01/01/03** - Replaces and supersedes any previously issued warranty.

FINISH CARE INFORMATION

We recommend that all faucets, drains, etc. be gently wiped dry with a soft cloth after use to avoid water spotting and water deposit buildup.

Use of a non-abrasive carnauba wax is required occasionally.